



**CARRY ALL YARD CART
MODEL NO. 45-0394**

TOOLS REQUIRED FOR ASSEMBLY

- (1) Screwdriver
- (1) M10 Wrench or Adjustable Wrench

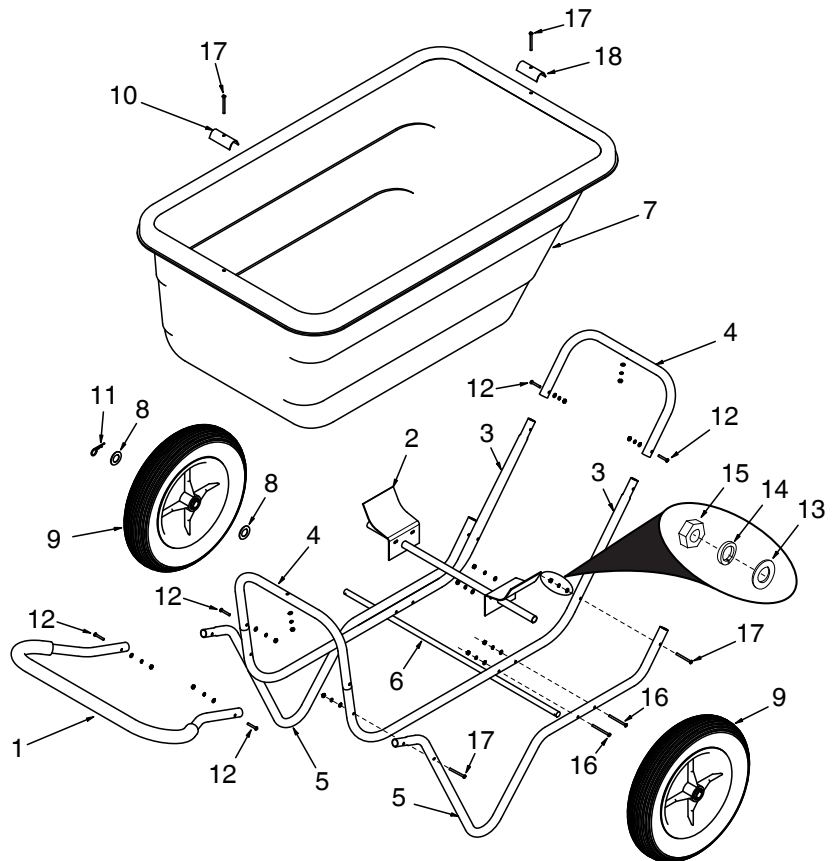
ASSEMBLY INSTRUCTIONS

NOTE: Do not tighten bolts until instructed.

1. Attach one leg support tube (5) to a base tube (3) using two middle length bolts (17), flat washers (13), lock washers (14) and nuts (15). Do not use middle holes.

2. Repeat first step, assembling second leg support tube (5) to opposite side of second base tube (3).
3. Attach assembled tubes (5) and (3) to each side of axle support assembly (2), with leg support tubes (5) on outside. Use two longest bolts (16), flat washers (13), lock washers (14) and nuts (15) for each side.
4. Assemble a U-brace tube (4) to each end of base tubes (3) using four short bolts (12), flat washers (13), lock washers (14) and nuts (15).
5. Attach handle tube (1) to leg support tubes (5) using two short bolts (6), flat washers (13), lock washers (14) and nuts (15).
6. Attach poly tray (7) to front U-brace tube (4) using a middle length bolt (17), wide front clamp (18), flat washer (13), lock washer (14) and nut (15). Repeat for rear U-brace tube (4) using narrow rear clamp (10). Tighten bolts and nuts in tray.
7. Tighten all other bolts and nuts.
8. Slide axle (6) into axle support assembly (2).
9. Assemble a washer (8), wheel (9) and another washer (8) onto axle (6). Secure with hairpin (11). Repeat for other side.

Ref. No.	Part No.	Qty.	Description
1	40030	1	Tube, Handle w/grip
2	40032	1	Ass'y, Axle Support
3	40027	2	Tube, Base
4	40029	2	Tube, U Brace
5	40028	2	Tube, Leg Support
6	40031	1	Axle
7	40026	1	Tray, Poly
8	R19212016	4	Washer
9	40033	2	Wheel
10	40036	1	Clamp, Rear (Narrow)
11	43343	2	Hairpin
12	40039	6	Bolt, Slot Pan M5 x 34
13	40040	16	Washer, Flat M5
14	40041	16	Washer, Lock M5
15	40042	16	Nut, Plain M5
16	40037	4	Bolt, Slot Pan M5 x 68
17	40038	6	Bolt, Slot Pan M5 x 58
18	40035	1	Clamp, Front (Wide)
	40034	1	Instruction Sheet



REPAIR PARTS

Agri-Fab, Inc.
809 South Hamilton
Sullivan, IL. 61951
217-728-8388
www.agri-fab.com